



Streamline Projects with Location Intelligence

ACCELERATE PROJECT DEVELOPMENT

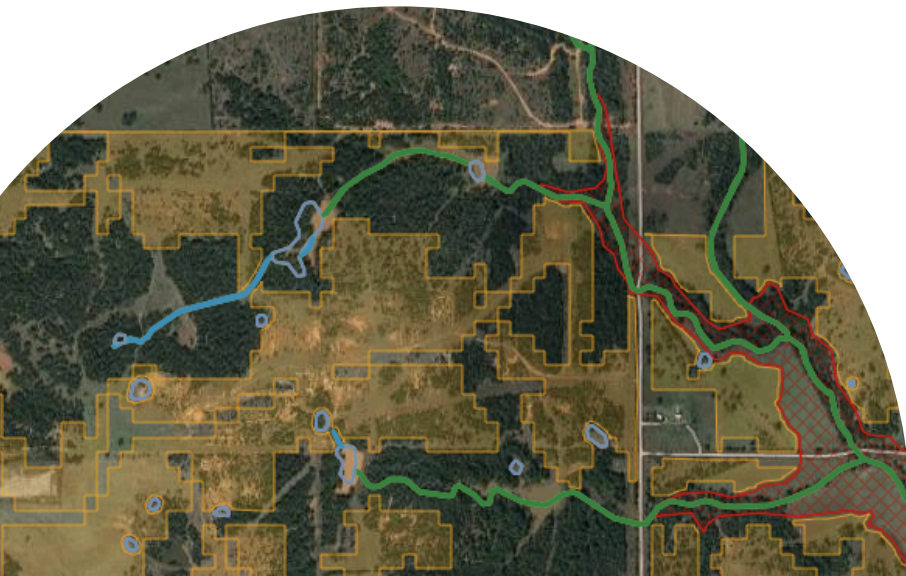
- Quickly evaluate land obstacles and environmental constraints anywhere in the U.S.
- Evaluate land use, jurisdiction, hydrological and geotechnical data in a simple map.
- Identify existing infrastructure to support greenfield development.
- Create cost surfaces to understand site suitability in an easy-to-use web map.

REDUCE INVESTMENT RISK

- Conduct due diligence to evaluate investments.
- Quickly identify endangered species, protected areas, and wetlands to avoid permitting delays.
- Evaluate property parcels and land ownership to avoid land owner conflicts and expedite acquisition.
- Access social vulnerability and political boundary data to reduce social and political risks.

SAVE TIME & MONEY

- Save months of manual data collection and analysis.
- Reduce time in field and permitting delays.
- Improve cost estimation with detailed crossing reports.
- Save up to 50% on routing and siting projects.



INDUSTRIES



POWER



RENEWABLE



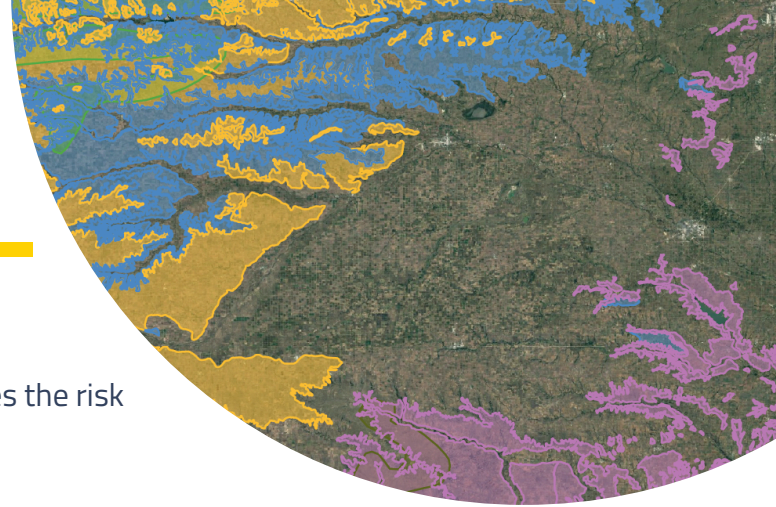
OIL & GAS



ENGINEERING



TELECOM



PIVVOT APPLICATIONS

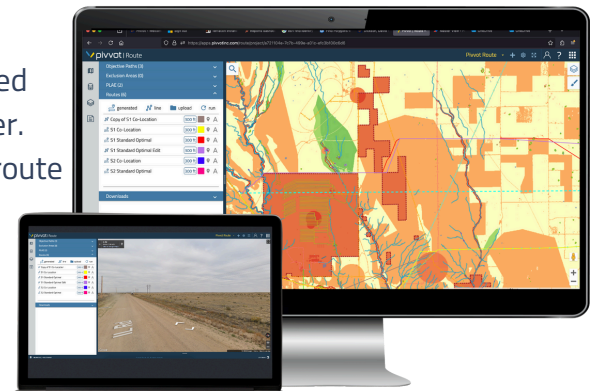
Pivvot slashes project planning by over 50% and minimizes the risk of costly miscalculations during the early stages.

DATA VISUALIZATION

- Upload asset or third-party data to view and area of interest.
- Extend our database with your subject matter expertise.
- Turn on and off data layers for any location across the United States.
- Download Pivvot data for an area of interest to use in any system.
- Collaborate with your team, customers and third-parties on a simple, fast and familiar map.

ANALYSIS SOLUTIONS

- **Siting Analysis:** Cut siting time from days to minutes to speed up real estate development projects and get to market faster.
- **Project Area Analysis:** Drop a location, draw a polygon or a route and gain a detailed understanding of your surroundings.
- **Routing Analysis:** Generate point-to-point preferred routes utilizing our data, platform and your criteria in record time.



SMART ANALYTICS

- **Crossing & Impact Report:** Evaluate crossing lengths and critical impacts for any linear corridor.
- **Parcel Report:** Immediately generate detailed parcel reports outlining critical attributes for development projects.
- **Cost Surface Report:** Generate a cost surface to visualize suitability for your energy project.
- **Custom Report:** Pivvot provides custom reporting to meet your unique needs.

PIVVOT SERVICES

- ✓ Collaboration Map
- ✓ Pivvot Data Layers On-Demand
- ✓ Upload Project Sites and Asset Data
- ✓ Draw Points, Project Areas, or Routes
- ✓ Generate Crossing & Impact Reports
- ✓ Load Third-Party Geospatial Data
- ✓ Customized Reporting
- ✓ Data (and Metadata) Download
- ✓ Mobile Field Data Collection Integration

SITING & ROUTING ANALYTICS

- ✓ Proprietary Expert Algorithm
- ✓ Point-to-Point Route Generation
- ✓ Identify Sites for Utility-Scale Projects
- ✓ Colocation with Existing Assets
- ✓ Download Elevation Profiles
- ✓ Generate Cost Surface
- ✓ Generate Comparison Reports
- ✓ Generate Impact & Crossing Reports